



*Briar Creek Greenway
Chantilly Area*

What is a Greenway?



- Active Transportation
- Linear Public Park
- Recreation
- Health and Fitness
- Desirable Amenity
- Access to destinations
- Creates a Sense of Community
- County standard is a 10'-12' wide asphalt trail conforming to AASHTO and ADA for recreational trails.
- 40+ miles are complete
- Mecklenburg County Greenway Plan calls for 202 miles.



2008 Master Plan Briar Creek Greenway



Project History

- Developer for Morningside approached Park and Recreation about a land swap concerning Veterans Park
- Developer committed to a specific land swap and in addition build a pedestrians bridge to Lyon Court, a greenway along the Briar Creek tributary and a connector into Veterans Park a financial commitment which would be in excess of \$300,000
- Financial situations changed. The land swap was completed and most infrastructure for Morningside installed, but the bridge and the greenway were not constructed.
- The new developer has been asked by Park and Recreation not to construct the greenway. The installation of the bridge is required by CDOT for connectivity. Park and Recreation has asked the developer to provide at least \$300,000 in funding for the bridge Briar Creek Greenway. The County would construct all improvements.
- 2008 bonds were approved for Briar Creek Greenway, Central Avenue to Commonwealth and Bay Street to Monroe Road. PayGo Funds to be approved or bonds to be sold 2019 or later.



10' WIDE ASPHALT TRAIL
AT 8% MAXIMUM SLOPE

CONCRETE PLAZA WITH
BOLLARDS AND ROLL CURB
AT END OF VETERAN LANE

12' WIDE BICYCLE/
PEDESTRIAN BRIDGE

VEHICULAR ACCESS TO BMP



MORNINGSIDE VILLAGE
BRIDGE CONNECTION TO LYON COURT



Central Avenue to Commonwealth Ave (FY16)
\$635,000



Bay Street to Monroe Road (FY19 Or later)
\$1,640,444



Existing Briar Creek Greenway and Creek

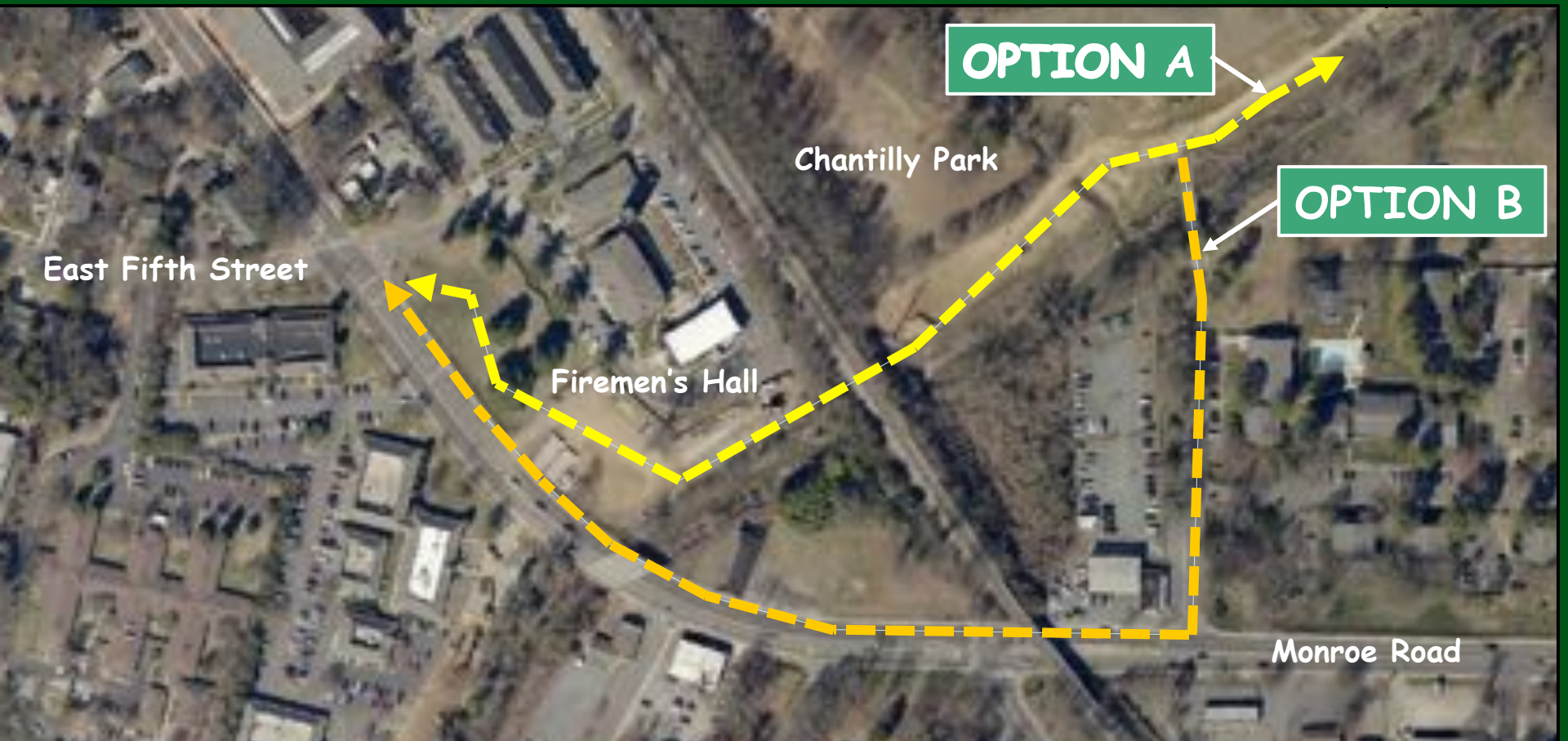


Arnold Drive to Masonic Road Reach



Looking north from
Commonwealth Avenue

CSX Trestle



A paved path winds through a grassy area with trees in the background. The path is light-colored and curves to the right. The grass is green and well-maintained. The trees are dense and green, suggesting a park or recreational area. The sky is bright and clear.

Gwen Cook, Planner, RLA

**Mecklenburg County Park and Recreation
5841 Brookshire Boulevard
Charlotte, NC 28216**

Phone: 908-314-1036

Email: Gwen.Cook@MecklenburgCountyNC.gov

Questions?

